

ProFace X

Outdoor & Vandal resistant Facial Recognition Terminal



ProFace X is a fully upgraded version of the ProFace product line, which is designed to deal with all kinds of scenarios. It's powered by the latest ZKTeco-customized CPU for running the intellectualized engineering facial recognition algorithm to boost up the performance in all aspects.

With its powerful core and the latest facial recognition algorithm, the ProFace X facial recognition capability has reached a new height in the biometrics industry with a maximum of 50,000 facial templates, facial recognition speed less than 0.3 sec per face, ultimate anti-spoof ability against almost all types of fake photos and videos attack .

Other than the powerful core, ProFace X is also equipped with the latest face capture system, which enables the terminal to recognize faces under extreme strong light conditions (50,000 lux), and a microwave detector to precisely evaluate the distance between the user and the device for waking up the terminal.

ProFace X comes with a robust design that can work in extreme weather conditions from -30°C to 60°C; The IP68 dust and waterproof standard and IK04 protection standard also enhance its outdoor durability.

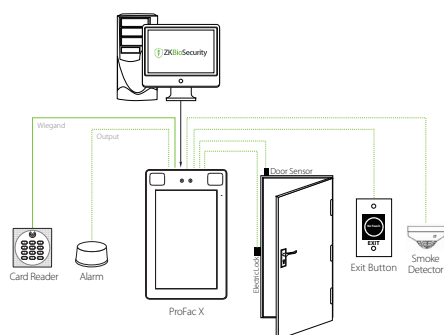
Features

- Ultra-large capacity of facial templates; 1:N - 30,000 facial templates (standard), maximum 1:N - 50,000 facial templates (optional)
- Rapid facial recognition within 0.3s
- Anti-spoofing algorithm against print attack (laser, color and B/W photos), videos attack, and 3D mask attack
- Intelligent energy-saving design, precisely evaluates the distance up to 2.5m (8.2ft) between the user and the device by a microwave detector before waking up the recognition terminal
- Integrated 125 kHz prox card reader (optional Mifare)
- 2MP starlight CMOS sensor camera with WDR function, which enables the terminal to recognize faces under extreme lighting conditions (0.5 lux – 50,000 lux)
- Supplement lighting with adjustable brightness
- 8" touch screen with 400 lux, which offers high visibility under strong and direct light
- Multiple communication methods: TCP/IP, RS485, RS232, Wi-Fi (optional)
- IP68 dust-proof and waterproof standard and IK04 protection standard
- Wide range of working temperature (-30 ~ 60°C; -22~ 140°F)

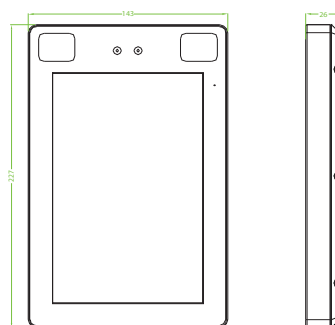
Specifications (G: GL Exclusive Feature)

<p>Capacity</p> <p>G Faces 30,000 (1:N) 50,000 (Optional)</p> <p>Users / Cards 50,000</p> <p>G Transactions 1,000,000</p> <p>User Photos 30,000</p> <p>Event Photos 10,000</p> <p>Compatibility</p> <p>Security Relay Box</p> <p>Wiegand / RS485 / RS232 Slave Reader with FP / RFID / Barcode / QR-code</p> <p>ZKBioSecurity Software</p> <p>Hardware</p> <p>G 900MHz Dual Core Customized AI CPU 512MB RAM / 8G Flash</p> <p>G 8" High light (400lux) IPS Touch LCD 125KHz EM Reader / 13.56MHz MF(Optional)</p> <p>G 2MP WDR Low Light Camera Adjustable Light brightness LED Hi-Fi Voice Receiver sensitivity Microphone Distance Detection Sensor Reset Button and Tamper Switch</p>	<p>Access Control Interface:</p> <p>Lock Relay Output</p> <p>Alarm Output / Auxiliary Input</p> <p>Exit Button / Door Sensor</p> <p>Special Functions:</p> <p>G IP68 & IK04</p> <p>G 0.3s High Speed Face Verification</p> <p>Live Face detection</p> <p>Communication Https Encrypted Optional</p> <p>G Event Snapshot</p> <p>Standard Functions:</p> <p>Access Levels, Groups, Holidays, DST, , Duress Mode (Password), Anti-Passback, Record Query, Custom Wallpaper & Screen Saver, Tamper Switch Alarm</p>	<p>Communication</p> <p>TCP/IP</p> <p>Wiegand Input / Output</p> <p>Wi-Fi (Optional)</p> <p>RS485 / RS232</p> <p>Additional Info</p> <p>Face Algorithm: ZKLiveFace5.8</p> <p>Working Temperature: -30°C ~ 60°C, (-22°F~ 140°F)</p> <p>Working Humidity: ≤93%</p> <p>Storage Temperature: -40°C ~ +65°C</p> <p>Storage Humidity: ≤93%</p> <p>Net Weight: 853g</p> <p>Dimensions (H*L*D): 227*143*26mm</p> <p>Power</p> <p>Operating Voltage 12V DC</p> <p>Current Draw < 2,000mA</p>
-----------------------------------------------------------------------------------------------------------------------------------------------------------------------------------------------------------------------------------------------------------------------------------------------------------------------------------------------------------------------------------------------------------------------------------------------------------------------------------------------------------------------------------------------------------------------------------------------------------------------------------------------------------------------------------------------------------------------------------------------------------------------------------	-------------------------------------------------------------------------------------------------------------------------------------------------------------------------------------------------------------------------------------------------------------------------------------------------------------------------------------------------------------------------------------------------------------------------------------------------------------------------------------------------------------------------------------------------------------------------------	-----------------------------------------------------------------------------------------------------------------------------------------------------------------------------------------------------------------------------------------------------------------------------------------------------------------------------------------------------------------------------------------------------------------------------------------------------------------------------------------------------------------

Configuration



Dimensions (mm)



ZKTECO CO.,LTD.
www.zkteco.com
E-mail: sales@zkteco.com



Copyright©2019 ZKTECO CO., LTD. All rights reserved.